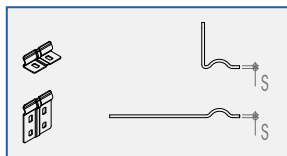
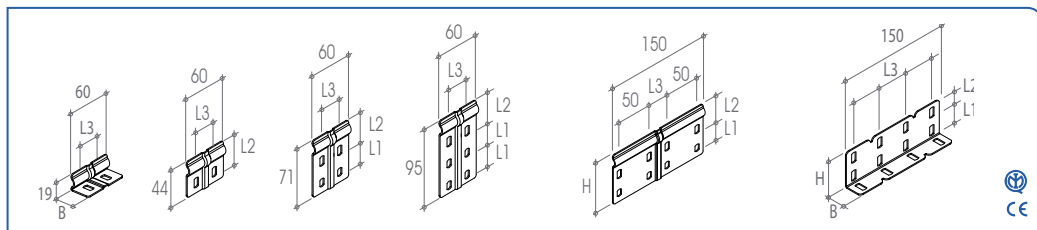
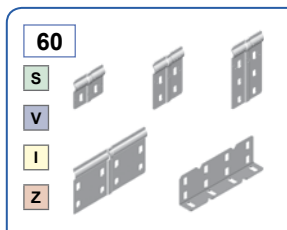


GIUNTO *Joint*

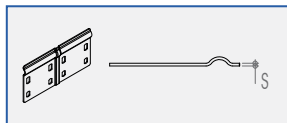


S	V	I	Codice/ Code	S mm	Δ kg/pz
A3	□	60F2A025H *	1,2	0,02	
A3	□	60F2B000H *	1,2	0,02	
A3	□	60F2C000H *	1,2	0,04	
A3	□	60F2D000H *	1,2	0,06	

B mm	H mm	L mm	L1 mm	L2 mm	L3 mm
25	19	60	-	-	30
-	44	60	-	37,5	30
-	71	60	25	37,5	30
-	95	60	25	37,5	30

Δ kg/pz	S mm	Z	Codice/ Code
0,02	1,2	A3 Z	60F2A025H *
0,02	1,2	A3 Z	60F2B000H *
0,04	1,2	A3 Z	60F2C000H *
0,06	1,2	A3 Z	60F2D000H *

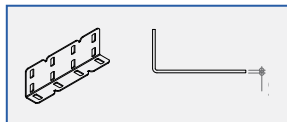
* Giunto utilizzabile per passerelle con base B ≤ 300 mm / Joint usable for cable trays with base B ≤ 300 mm



S	V	I	Codice/ Code	S mm	Δ kg/pz
A3	□	60F4B000K	1,5	0,08	
A3	□	60F4C000K	1,5	0,12	
A3	□	60F4D000K	1,5	0,17	

B mm	H mm	L mm	L1 mm	L2 mm	L3 mm
	44	150	-	37,5	30
	71	150	25	37,5	30
	95	150	25	37,5	30

Δ kg/pz	S mm	Z	Codice/ Code
0,08	1,5	A3 Z	60F4B000K
0,13	1,5	A3 Z	60F4C000K
0,19	1,5	A3 Z	60F4D000K



S	V	I	Codice/ Code	S mm	Δ kg/pz
A3	□	60F4B025K *	1,5	0,07	
A3	□	60F4C025K *	1,5	0,11	
A3	□	60F4D025K *	1,5	0,16	

B mm	H mm	L mm	L1 mm	L2 mm	L3 mm
25	25	150	-	11	42
25	50	150	27	11	42
25	75	150	27	11	42

Δ kg/pz	S mm	Z	Codice/ Code
0,07	1,5	A3 Z	60F4B025K *
0,12	1,5	A3 Z	60F4C025K *
0,17	1,5	A3 Z	60F4D025K *

* Giunto necessario per la connessione di elem. rettilinei forati con base B ≥ 400 mm / Joint necessary for the connection of perforated straight elem. with base B ≥ 400 mm

□ Scegli il materiale/ Choose the material